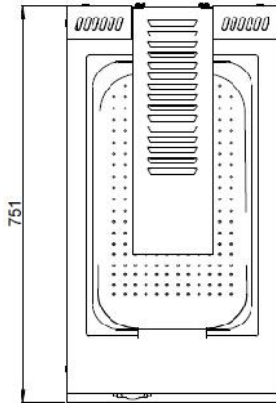
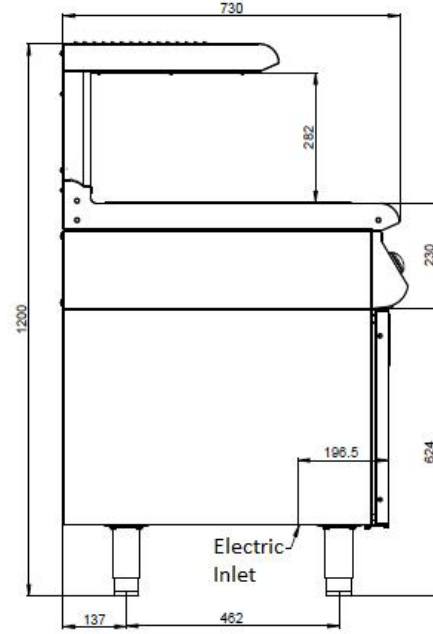
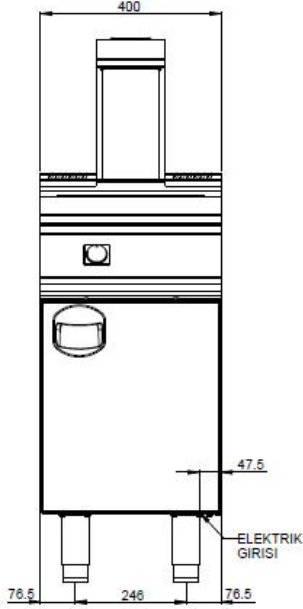


İNOKSAN

7HE10

½ MODULE ELECTRIC FILLED POTATO RESTRICTIVE



GENERAL FEATURES

- Chip Scuttle
- Perfect 700 line, 1/2 module, with cabinet,
- Body manufactured of 18/8 Cr-Ni s/s stain finished sheet and inner parts of alumunized steel,
- GN 1/1x150 mm covered, power setting button,
- Protect to potato's temperature from top, with 750W homogeneous bulb,
- Potatos's oil filtering with filter plate,
- It is manufactured with cabinet as standart. Cabinet is manufactured from stainless stell. Cabinet doors are with plastic holder,
- For multi-purpose use, on a cupboard (with or without doors) or on cantilever for island type installations,
- Adjustable feet of stainless stell pipe, carrier sheet is 2 mm aluminized sheet,

TECHNICIAL SPECIFICATION

Total Power	650	W
Electric Inlet	230	V
Cablo Cut	3x1,5	mm ²
Palett + Box Measures	422x772x577	WxDxH