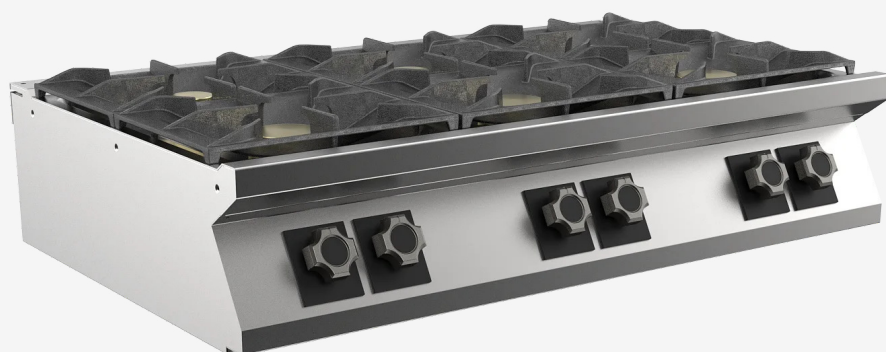


RANGE	CODE	MODEL	FUNCTION
MI - 90	MAMCOOO3O3O	PC9I2GT	Gas Ranges

ITEM

6 gas burner boiling top



RANGE	CODE	MODEL	FUNCTION
MI - 90	MAMCOOO3O3O	PC9I2GT	Gas Ranges

ITEM

6 gas burner boiling top



TECHNICAL SPECIFICATIONS

WIDTH (mm):	1200
DEPTH (mm):	920
HEIGHT (mm):	250
WEIGHT (Kg):	112
VOLUME (m ³):	0.6
GAS POWER (kW):	48
COOKING ZONES N°:	6
COOKING ZONE DETAILS:	3x 6kW 3x 10kW

DESCRIPTION

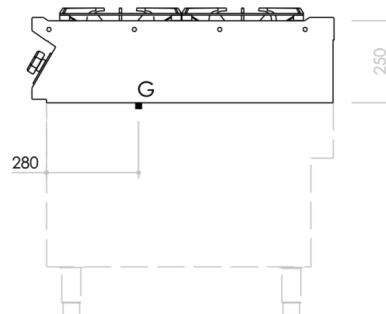
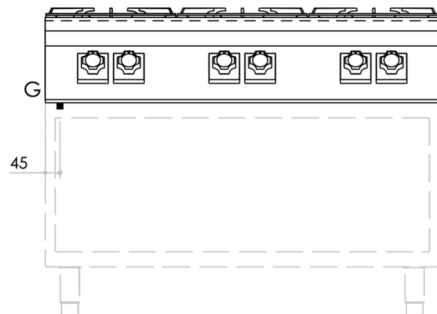
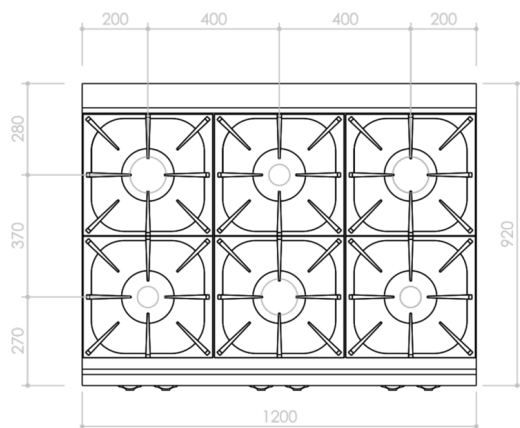
Gas boiling top in AISI 304 stainless steel. 20/10 pressed steel top with anti-spill front edge, designed for flush alignment with hermetic seal supplied. Top designed to accommodate water column accessory. Appliance comprising 6 main burners hermetically sealed to the top, 3 of which with maximum output of 6 kW, 3 with 10 kW output. Ergonomic knobs shaped to prevent water infiltration. Output control from 1.6 to 6 kW and from 2.5 to 10 kW respectively, by means of a valve with safety thermocouple. Main burner ignition by means of permanent low-energy pilot burner (170 W). Pilot burner and thermocouple are located underneath the main burner body, protected from accidental impact and spills. Boiling top with heavy duty pan stands in RAAF enamelled cast-iron (acid, alkali and flame resistant); the pan stands are compatible with both small and large pans. IPX5 water-resistant rating.



RANGE	CODE	MODEL	FUNCTION
MI - 90	MAMCOOO3O3O	PC9I2GT	Gas Ranges

ITEM

6 gas burner boiling top



INSTALLATION SPECIFICATIONS

(G) Gas Inlet: $\varnothing 1/2"$

